



# VOK-07-F

Low Floor Front Axle  
Steered



MAN front axles come from large-scale series production for commercial vehicles and meet the most demanding requirements.

The VOK-07-F axle has been developed specifically for low-floor buses, features a special dropped axle beam, and has a 102" width for the North American market.

The dropped beam of this axle is a cast iron construction with a hollow center section.

The wheel parts are swivel-mounted on kingpins. The kingpin mounting consists of a needle bearing below and above. High-quality sliding bearings made of tin bronze absorb the radial forces and hardened slide rings (with roller bearings), the axial forces.

The wheel hub bearings are maintenance-free (Hub Unit).

This axle is available with both, s-cam drum brakes and disc brakes.

The drum brakes feature automatic brake lining adjustment, and wear indicators on both, OEM brake linings and slack adjusters.

The disc brakes feature automatic pad wear adjustment, and an electronic wear indicator.

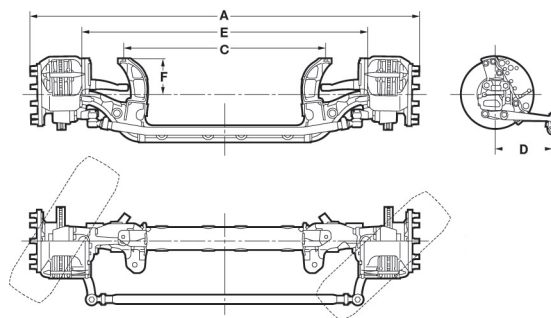
The axle is equipped with an anti-lock braking system (ABS) and continuous electronic wear indicators for disc brakes are optional.

The rotor is independent from the wheel hub bearings and can be removed separately.

The brake linings / pads are asbestos-free.

Only rims and tires released by MAN may be fitted.

The brake cylinders are pneumatically actuated and are included as a customer option in the delivery content of the axle.



## Technical data

VOK-07-F width 102"

		Disc Brake	Drum Brake
Max. axle load.....	lb.....	15,873.....	15,873
A = Overall width without tires.....	inch.....	101.5.....	102.2
Widths across brake drums / hub.....	inch.....	98.4.....	98.4
C = Spring track.....	inch.....	54.53.....	54.53
D = Distance from track rod to centerline.....	inch.....	14.57.....	14.57
E = Kingpin spacing.....	inch.....	75.63.....	75.63
Wheel size.....	inch.....	22.50.....	22.50
Steering, right / left.....	r / l.....	r / l.....	r / l
Steering angle (inside wheel).....	degree.....	53.....	53
Steering angle (outside wheel).....	degree.....	37°46'.....	37°46'
Qty. of wheel studs / hole circle diameter .....	mm.....	10 / 335.....	10 / 335
Brake drum / disc diameter.....	inch.....	17.01.....	16.14
Brake pad / lining area.....	inch <sup>2</sup> .....	121.50.....	366.42
Air brake cylinder diameter.....	inch.....	20 / 24.....	20 / 24
Weight without wheels.....	lb.....	1102.31.....	1058.22

## Contact Us

---

# MAN Engines & Components Inc.

591 SW 13th Terrace  
Pompano Beach, FL 33069  
USA

Phone: (954) 946-9092  
(800) MAN-2842

Fax: (954) 946-9098

Email: [axles@man-mec.com](mailto:axles@man-mec.com)

Web: [www.man-mec.com](http://www.man-mec.com)

